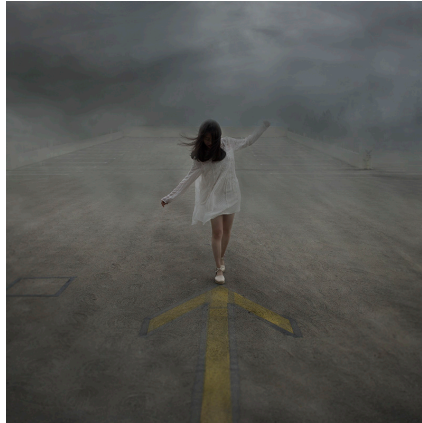


PACIFIC ART LEAGUE



ANNUAL REPORT 2017

Cover images

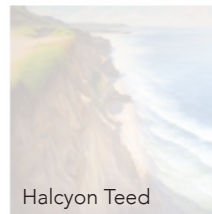
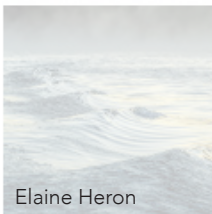
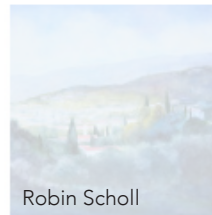
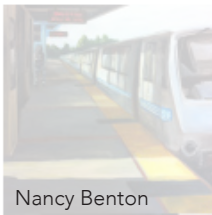
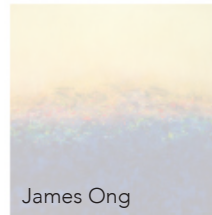
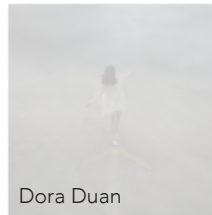
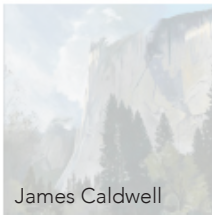


TABLE OF CONTENTS

2	A MESSAGE FROM THE EXECUTIVE DIRECTOR & CEO
3	BOARD PRESIDENT'S REPORT
4	EXHIBITION REPORT
5	EDUCATION REPORT
6	SPECIAL EVENTS & COMMUNITY ENGAGEMENT
7	SPONSORS & DONORS
7	VOLUNTEERS
8	PUBLIC SUPPORT & REVENUES
8	OPERATING EXPENSE
9	AUDITOR'S REPORT
10	STATEMENT OF FINANCIAL POSITION
11	STATEMENT OF ACTIVITIES
12	STATEMENT OF CASH FLOW
13	NOTES TO THE FINANCIAL STATEMENTS
17	BOARD & STAFF
17	IN MEMORY OF

PACIFIC ART LEAGUE OF PALO ALTO
668 Ramona Street
Palo Alto, CA 94301
(650) 321-3891 pacifcartleague.org

A MESSAGE FROM EXECUTIVE DIRECTOR & CEO



Courtesy Palo Alto Weekly

Dear Members and Friends,

Pacific Art League is a rare combination of people, ideas and a beautiful physical space serving the visual arts, anchored to the downtown of this uniquely influential town. Known globally for its leadership in technology, the region is now beginning to express a greater interest in the visual arts. With the Pace Gallery newly located just a block away and the Anderson Collection adding to the profile of our local, world class museums, PAL is poised to take advantage of this accelerating interest in the visual arts. As a place not only to learn and enjoy the creative process yourself, PAL can help the uninitiated to understand the joy of appreciating and collecting original works and making art a part of your life.

Joining PAL in June of this year, gave me the opportunity to understand some of the key drivers of this venerable organization. The strong financials of the past year provide us with a stable foundation for our ambitious expansion plans.

Already in this new financial year we are adding innovative programs aligned to our evolving mission, which includes providing high quality art classes for all ages and all backgrounds. We are now hosting more than 70 students in our building from K 8th grade from the AltSchool, just blocks from 668 Ramona. Additionally, in 2018 we will embark on a new program with the county of Santa Clara to provide important art therapy classes for youth at risk, across the county.

Core to our success is a professional staff who work tirelessly to provide an exceptional curriculum of art classes, unparalleled in the region in both breadth and variety of medium. We are also planning a calendar of engaging exhibitions in 2018, which will draw new people into our building, through the choice of compelling themes and media. We are adding marketing resources to the team to ensure that every aspect of this organization is marketed effectively, while positioning us for growth commensurate to the increasing interest in the arts in Silicon Valley.

In the immediate future we will expand our photography class options, support our faculty with a variety of marketing tools, publish new promotional video assets, launch our new web site and announce new influential jurors to shows, all augmenting our reputation in the regional art community.

We are also developing a new strategic plan for 2018, which will include a development strategy to support our increasing focus on providing art education for underprivileged children. I hope the plan will be an effective road map which we can look back at in a year and see solid progress in the development of PAL as an institution recognized for excellence, regionally and beyond.

Jon Graves
Executive Director & CEO

BOARD PRESIDENT'S REPORT



Dear Members and Friends of the Pacific Art League,

We have completed another successful year of operation and we are now just four years away from celebrating our centenary, in 2021.

This past February we restarted our annual fundraising gala and thanks to the tireless efforts and leadership of board member Theresa Peek, together with other board members, staff, and volunteers, it was a tremendous success. With the bar set high, we need all hands-on deck to ensure the 2018 gala exceeds the fundraising success of 2017.

We now have a dedicated and competent staff led by Jon Graves our new Executive Director and CEO. The team is working in concert with the Board and all are focused on our overall objective of outstanding art education and high quality, engaging exhibitions. Over the last year once again we participated in the regional Open Studio weekend in May. In August we saw the return of the Mobile Digital Art Academy and Conference (mDAC) with an excellent show of mobile and iPad derived art.

We continue to improve the expertise and quality of our faculty of instructors, who are the soul and livelihood of our organization. We are working with them to promote their profile and to increase the size of their classes. Our board member, Hazel Keelan, has produced and published interviews with instructors and soon you will be able to view video footage of them at work on our website. The marketing and web improvement plans developed by board member Rebecca White earlier this year, are already showing a strong positive impact.

In 2015 we introduced term-limits for the board of directors (two 3-year terms with a 2-year interval for rejoining). As a result, we are sad to see three of our long-term members departing the board by the end of this year. However, we are excited to be interviewing a broad group of very qualified new applicants, who will help us develop new sources of funding for our rapidly growing organization.

I would like to thank outgoing board members, Josephine Schuster, Robin Scholl and Joy Chase for the tireless dedication and service to PAL over many years. I'm hopeful they will continue to stay involved in our thriving art community here at 668 Ramona.

A handwritten signature in black ink, appearing to read 'Theo Keet'. The signature is stylized and fluid, with a long, sweeping line extending upwards and to the right.

Theo Keet
Board President

EXHIBITION REPORT

Dear Members and Friends,

In 2017 the Exhibition Program followed on the path of PAL's overarching mission: to advance the expression, appreciation and enjoyment of the arts.

PAL's monthly-juried exhibitions brought in the best artists in Silicon Valley and the San Francisco Peninsula. PAL's Gallery Manager, Devan John, has been consistent in all of the details in hanging quality shows. This year, we introduced curated guest artists with highlights including: Ellen Heck, Jon Wessel, Jerry McLaughlin and Oleg Lobykin. We engaged quality jurors notably Chris Winfield, George Rivera and Jim Smyth. In addition, we successfully collaborated with the Garden Club of Palo Alto, Silicon Valley Open Studios (SVOS) and Downtown Streets. Special thanks to Office Manager and Membership Manager, Yogita Kandpal, for managing First Friday Gallery Opening logistics and coordinating with our many volunteers.



August 2016 – Pacific Prints: With a deep rooted tradition of print making at PAL, we are always proud to exhibit the best in Bay Area printers' works.

September 2016 – 95th Anniversary Show: We celebrated our 95th birthday with a well supported exhibition featuring donated original works by members and friends

October 2016 – Landscapes, Seascapes & Urbanscapes: With works across all mediums this popular show also included works by two PAL watercolor instructors, Robin Scholl and Steve Curl.

November 2016 – A New View: A dynamic show focusing on photography, with an additional showcase in the Corridor Gallery with works by Richard Dischler from Keeble & Schuchat.

December 2016 – Holiday Art Market: A popular tradition at PAL that puts us all in the holiday spirit. Works in this show are specifically selected and promoted as pieces that would make great holiday gifts.

January 2017 – PAL Members' Exhibition: We kicked off the New Year with an exhibit that showcased all of our talented Members; from instructors, to students, to art enthusiasts.

February 2017 – What's Not to Love: Celebrating the month of love, this show explores the notion in all mediums.

March 2017 – Fur, Feathers & Fins: This popular show was a highlight of spring and brought in excellent work.

April 2017 – Abstraction: Contemporary artists filled PAL's gallery walls with thought provoking works.

May 2017 – Figures and Faces: Following on the heels of Abstraction this show featured works of the body, brought in true expressive drawing and painting styles.

June 2017 – Summer Exposure: With the theme of "California", PAL was honored to have Rachel Lazo juror this show featuring our favorite state.

July 2017 – Pacific Prints: We closed out the year featuring our favorite print works.

If you would like to rename our Corridor Gallery after a loved one or for an artist friend and mentor, please talk to Jon Graves our Executive Director about a donation to cover the naming. A suitable ceremony will accompany such a generous gesture next year. FY18 will bring many exciting exhibitions!

Joy Chase & Kay Culpepper
Joint Chairs, Exhibition Committee

A MESSAGE FROM THE CHAIR OF EDUCATION

Dear Members and Friends,

The 2017 Educational Year at the Pacific Art League brought an explosion of new programs, instructors and classes. We continue to teach in our two large galleries, surrounded by art, a perfect environment for learning!

The Pacific Art League has new instructors in the fields of monotype, cartooning and anime, abstract, head drawing, figure drawing, and portraiture.

PAL continues its long-standing tradition every year of honoring its teachers with an annual Instructors Dinner, with fine cuisine and entertainment as we recognize the talent and commitment of our valued faculty. Other traditions include our ever-popular Art and Wine Nights, Holiday Celebration Events, and critique nights with guest instructors. We have also recently embarked on a video interview project to highlight our highly qualified faculty of over 40 instructors, as we continue to help them build their profile in the art community.

Grants secured for the Arts Education Programs at PAL this past year include: The New Day Program with \$8,500 from the Palo Alto Community Fund, The Veterans Initiative in the Arts with \$9,100 from California Arts Council, a Local Impact Grant of \$8,400 for the Boys and Girls Club from The California Arts Council, and the Mobile Digital Arts Council supported with \$1,500 from the Redwood City Cultural Commission.

We have innovative new programs planned for 2017/18 and I am excited to see the continuing growth of our education program, which we believe provides the most comprehensive curriculum in the visual arts on the Peninsula.

Robin Scholl
Chair of Education



Special Events

Pacific Art League Gala - This past year we were delighted to re-introduce our annual gala with the theme of a Speakeasy in the roaring twenties. For many years this high-profile event in the Palo Alto social calendar has been a mainstay of our special event fundraising, successfully led by our long serving Board Member, Josephine Shuster. This past February we returned to the beautiful Garden Court Hotel to celebrate the extraordinary history of our unique organization. With over 150 members and supporters of PAL, we enjoyed live and silent auctions, dancing, fine cuisine and our community dressed in glorious twenties regalia. The event was a significant financial success, with corporate support from The Arrillaga Foundation, Avid Bank and Michael Dreyfus Realtors. We are also excited to announce our theme for 2018, "Great 20th Century Artists and their Art."

Anniversary Show - Our 95th Anniversary Exhibition was a tremendous success with over 200 pieces submitted and hung salon style, reflecting the strength of our active community of practicing local artist and members. This annual event continues to gain tremendous support as we steadily approach our highly anticipated Centenary in 2021.



Community Engagement

This past year was notable for the volume of outreach activity PAL undertook with a wealth of different organizations, spreading the joy of art education to our larger community. Through various grants we were able to create programs for Downtown Street Team, Veterans, Boys and Girls Club and also several schools in the Menlo Park school district. We will continue to enhance this facet of our activity next year, as our foot print as a center for excellence in art education grows.

Fundraising

With a strong reputation for effective deployment and use of funding, PAL is grateful to have secured grants from the following organizations in FY17.

- California Arts Council
- Palo Alto Community Fund
- SVCcreates
- The Robin Wells Fund for Artistic Excellence

We are creating a comprehensive new development program for FY18, aligned to our expanding mission of offering art education to all ages and all socio-economic backgrounds.

We would like to also give special thanks to our valued friends at Wilson Sonsini Goodrich & Rosati. We enjoy exceptional ongoing counsel at our board meetings and with the contractual reviews we undertake as our organization continues to grow. It is a pleasure to work with the team at WSGR.



SPONSORS & DONORS

ROBIN WELLES FUND

Margaret Miller
Daniel Kostenbauder
Carolyn Stewart
Steve Curl
Craig Sereda
Mary & Mathias Jordan
Berton Keith

SPONSORS

Avid Bank
Arrilliga Foundation
Dreyfus Properties
Oliver & Co.
Pacific Union

DONORS

Milo Abadilla
Judy Anderson
Ron Andrews
Becky Bartunek
Irene Beardsley
Z.A. Bleile
William Bruner
James Cabral
Maura Carta-Greenlaw
Joy Chase
Patricia Cross
Kay Culpepper
Corinne Derringer
Richard Feldman
Patrice Gelband
Julie Kaufman

Hazel Keelan
Theo & Elza Keet
Stephanie Koran
Daniel Kostenbauder
Judith Kramer
Chai Lo Lai
James Gilbert Little
Cynthia Lovewell
Michael & Saundr MacGregor
Carol Matre
Mary Beth McWright
Kay Melchor
Sue Miklos
Sondra Murphy
James Otieno
Marian Parr

Julie Pavlina
Theresa Peek
Clifton Poon
Amy Rattner
G Reagan
Glen & Debra Rojas
Ruben Consulting Group
Loren & Shelley Saxe
Robin Scholl
Rick & Lauren Schwartz
May & Sway-Yah Shei
Mary Shenk
Josephine Shuster
Frederick Stanske
Rebecca White
Nancy Wong

VOLUNTEERS

Thank you to our exceptional group of volunteers, who give so much time and energy to supporting the visual arts in Palo Alto.

Total number of volunteers: 67

Total number of hours donated by volunteers: 1949

Total number of events: 12 exhibitions + events

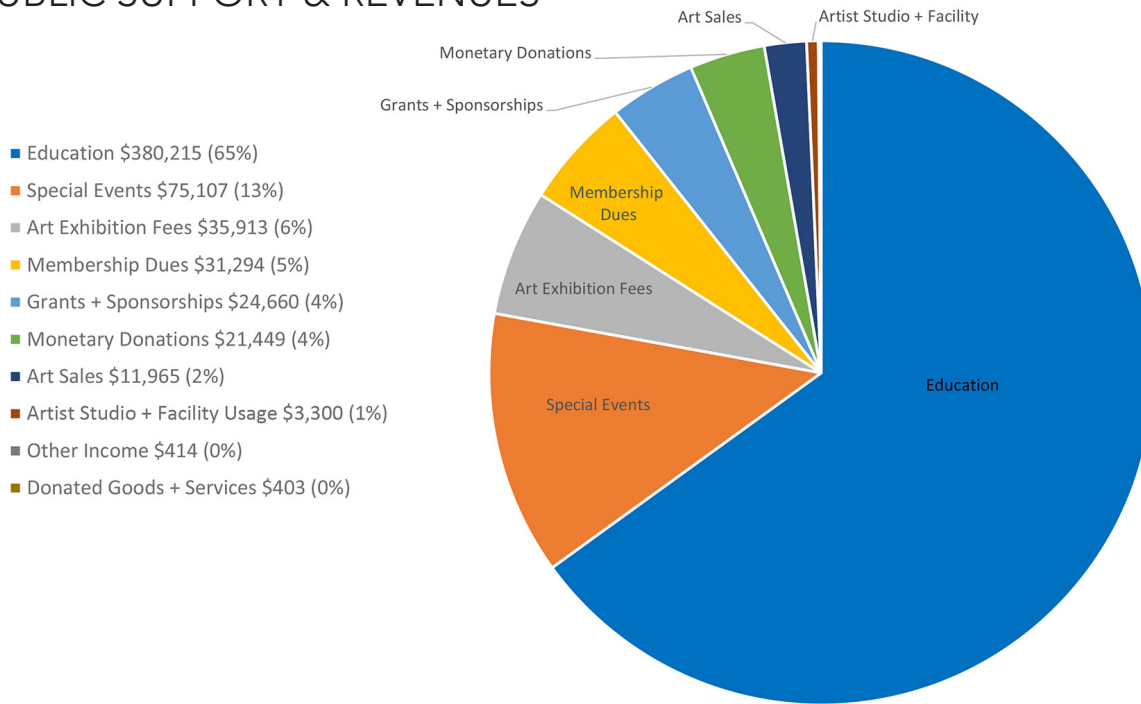
VOLUNTEERS LIST

E C
Abigail Leon
Alan Wei
Amy Best
Amy Lin
Andrew Lee
Annie Zhang
Bree Cohn
Camille Laevens
Courtney Cooper
Crystal Cebedo
Danitra David
Deborah Maufer
Ellen Kramer
Emma Goldberg
Eric Naputi
Frances Wang
Gina Keydeniers
Grace Li
Hiba Ahammou
Hiroko Kaido
Ivory Tang
Jayla

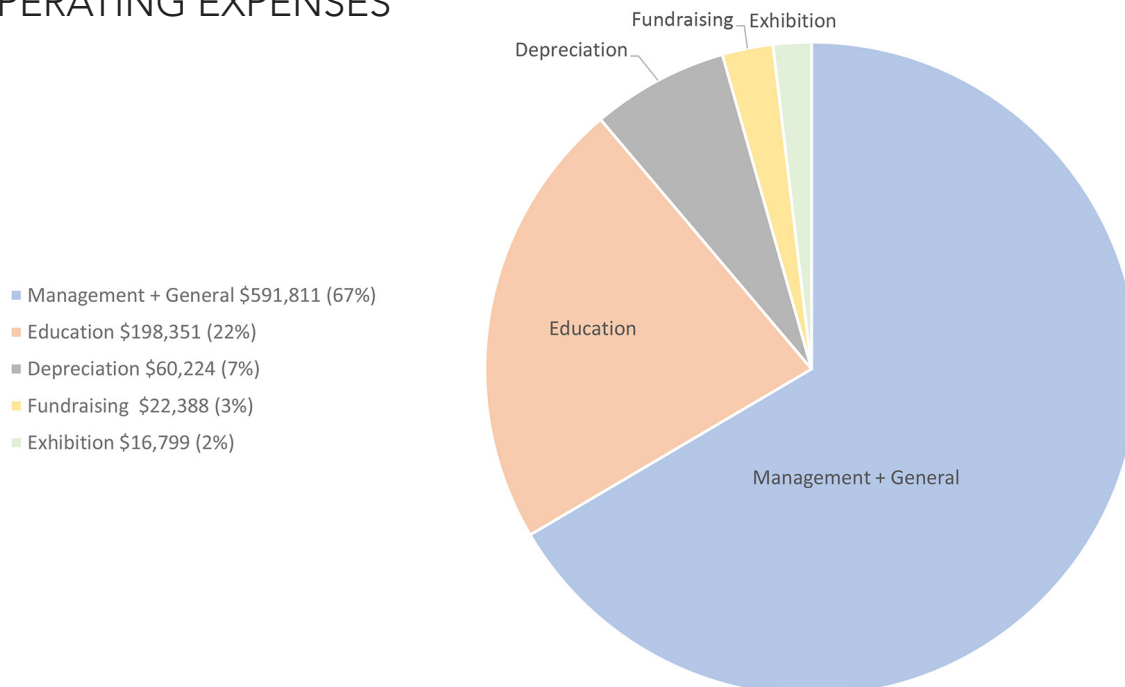
Jennifer Sales
Jennifer Xu
Jenny Gao
Jenny Shi
Joshua Vallancourt
Junting Hu
Katya Greene
Kazuki Horiguchi
Kelly Liu
Kelvin
Kenneth Chun
Kundan Das
Leo Lee
Lily Z
Lina Tellefsen
Madison Mc Crary
Maria Pazos
MC
Ming Mao
Morgan Grant
Natalia Lvova
Nibedita Choudhury
Philip Ma

Rashida Khan
Rebecca Bui
Richard Jun
Robert Rivera
Ruyuan Ge
Samuel Eaton
Sean Gordon
Sergi Mata
Shwetha Karthik
Silvano Furlan
Supriya Lall
Tara Chafey
Tessa Cheng
Valentina Antihi
Varuni Saxena
Wei Fung
Yejin Kim
Yitian Ma
Yung Ching Hung
Yuou Jiang
Zo Ann Lee

PUBLIC SUPPORT & REVENUES



OPERATING EXPENSES



Orlene Chartain
Certified Public Accountant
491 Seaport Court, Suite 101
Redwood City, CA 94063

Board of Directors

Pacific Art League of Palo Alto

We have audited the accompanying statement of financial position of Pacific Art League of Palo Alto (a not-for-profit corporation) as of July 31, 2017, and the related statements of activities and cash flows and the accompanying notes to the financial statements for the year then ended. These financial statements are the responsibility of the management of Pacific Art League of Palo Alto. Our responsibility is to express an opinion on these financial statements based on our audit.

We conducted our audit in accordance with auditing standards generally accepted in the United States of America and the standards applicable to financial audits contained in *Government Auditing Standards* issued by the Comptroller General of the United States. Those standards require that we plan and perform the audit to obtain reasonable assurance about whether the financial statements are free of material misstatement. An audit includes examining, on a test basis, evidence supporting the amounts and disclosures in the financial statements. An audit also includes assessing the accounting principles used and significant estimates made by management, as well as evaluation the overall financial statement presentation. We believe that our audit provides a reasonable basis for our opinion.

In our opinion, such financial statements present fairly, in all material respects, the financial position of Pacific Art League of Palo Alto as of July 31, 2017 and the statements of activities and cash flows for the year then ended in conformity with accounting principles generally accepted in the United States of America.

Our audit was performed for the purpose of forming an opinion on the basic financial statements of Pacific Art League of Palo Alto, taken as a whole. In accordance with *Government Auditing Standards*, we have also issued a report dated October 17, 2017 on our consideration of Pacific Art League of Palo Alto's internal control over financial reporting and our test of its compliance with certain provisions of laws, regulations, contract and grants. That report and the accompanying notes to the financial statements are an integral part of the audit and should be read in conjunction with this report in considering the results of our audit.

Orlene Chartain CPA

October 17, 2017

STATEMENT OF FINANCIAL POSITION AS OF JULY 31st

	2017	2016
Assets		
Cash and cash equivalents, including marketable securities	\$339,930	\$242,874
Accounts Receivable	42,910	23,873
Prepaide Expenses	25,647	40,783
Fixed Assets, Net of Accumulated Depreciation	5,514,672	5,680,817
Total Assets	\$5,923,158	\$5,988,346
Liabilities		
Accounts Payable and Accrued Expenses	20,081	33,635
Deferred Income	108,691	86,184
Lease Deposit	89,466	89,466
Bank Loan	5,055,834	5,234,029
Total Liabilities	\$5,274,072	\$5,443,314
Net Assets		
Unrestricted	643,948	521,547
Temporarily Restricted	5,137	23,485
Total Net Assets	\$649,085	\$545,032
Total Liabilities and Net Assets	\$5,923,158	\$6,377,874

The accompanying notes are an integral part of these statements

STATEMENT OF ACTIVITIES

	YEAR ENDED	
	2017	2016
INCOME		
Program and Service Revenue		
Art Class & Workshop Fees	\$380,215	\$388,199
Membership Dues	31,294	27,102
Art Sales Proceeds	11,965	11,304
Art Exhibition Fees	35,913	29,220
Artist Studio & Facility Usage Fees	3,300	3,120
Other Income	414	75
Total Program Service Revenue	\$463,101	\$459,021
Public Support		
Monetary donations	21,449	27,658
Grants/Sponsorship	24,660	16,000
Donated goods and services	403	50,184
Special event	75,107	17,971
Total Public Support	\$121,619	\$111,813
Investment Income	-	(7,517)
TOTAL INCOME	\$584,720	\$563,317
EXPENSES		
Program Services		
Education	198,351	190,673
Exhibition	16,799	11,413
Total Program Services	\$215,150	\$202,086
Supporting Services		
Management and general	591,811	546,829
Fundraising	22,388	7,728
Depreciation	60,224	60,494
Total Supporting Services	\$674,424	\$615,050
TOTAL EXPENSES	\$889,574	\$817,136
Temporary rental income net of lease and commission expenses	\$380,107	\$292,905
Excess of income over expenses	\$75,253	\$39,086
Net assets, beginning of the year	\$545,032	\$529,615
Adjustment to net assets at the beginning of the year	\$28,800	(\$23,669)
NET ASSETS, END OF THE YEAR	\$649,085	\$545,032

The accompanying notes are an integral part of these statements

STATEMENT OF CASH FLOW

	YEAR ENDED	
	2017 - July 31st	2016 - July 31st
CASH FLOWS FROM OPERATING ACTIVITIES		
Changes in net assets	\$75,253	\$39,086
Non-cash expenses (income), mainly depreciation	167,289	167,188
Increase (Decrease) in net operating assets and liabilities:	5,052	(76,373)
Net cash provided by operating activities	\$247,595	\$129,901
CASH USED FOR INVESTING ACTIVITIES AND LOAN PAYMENT		
Fixed assets acquisition	(1,144)	(10,261)
Mortgage payments	(178,195)	(362,755)
Prior year adjustments, mainly for property tax reassessment	28,800	(23,669)
	\$(150,539)	\$(396,685)
NET CASH INCREASE (DECREASE)	\$97,056	(\$266,784)
CASH, beginning of the year	\$242,874	\$509,658
CASH, end of the year	\$339,930	\$242,874

The accompanying notes are an integral part of these statements

NOTES TO FINANCIAL STATEMENTS

(1) Operations and Non-Profit Status

Pacific Art League of Palo Alto (PAL) was founded in 1921 with a mission to provide an environment for advancing the expression, appreciation and enjoyment of the visual arts through classes, workshops and art-centered community events. PAL is exempt from Federal and State income taxes as an organization formed for charitable purposes under Section 501 © (3) of the Internal Revenue Code. Donors may deduct contributions made to PAL within the Internal Revenue Code regulations.

(2) Significant Accounting Policies

PAL prepares its financial statements in accordance with general accepted accounting standards and principles established by the Financial Accounting Standard Board (FASB). References to US GAAP in these footnotes are to the FASB Accounting Standard Codification.

Revenue Recognition:

Contracts are recorded over contract period as services are provided. Grants and donations are recorded as revenue when received or unconditionally pledged. PAL reports gifts of cash and other assets as restricted if they are received with donor stipulations that limit the use of the donated assets. When a donor restriction expires, those assets are reclassified to unrestricted and reported in the statement of activities as net assets released from restriction.

Program revenue and all other revenue are recognized when earned. Payments received or made in advance of services being performed are recorded either as deferred revenue or prepaid expenses.

Property, Equipment and Depreciation:

Purchased property and equipment are recorded at cost. Renewals and improvements are capitalized, while repairs and maintenance are expensed as they incur. Depreciation is computed using the straight-line method over the following useful lives:

Building - 40 years
Office and artistic equipment - 3-5 years
Furniture and fixtures - 5 years

Donated Goods and Services:

PAL reports tangible gifts as unrestricted support unless explicit donor stipulations specify how the donated assets must be used. PAL receives services of professional volunteers and donated goods and services in various aspects of its programs and operations. The value assigned to these services and items, based on the donor's estimate of fair value, has been reflected in the accompanying financial statements as donated goods and services.

Unrestricted Net Assets:

Unrestricted net assets are those net resources that bear no external restrictions and are generally available for use by PAL. PAL has grouped its unrestricted net assets as funds available to carry on the operations of PAL.

Prior Period Adjustments:

Adjustments related to prior years such as re-assessment of property taxes have been reported as prior period adjustments to the opening net asset position.

Estimates:

The preparation of financial statements in accordance with US GAAP requires management to make estimates and assumptions that affect the reported amounts of assets and liabilities and disclosure of contingent assets and liabilities at the date of the financial statements and the reported amounts of revenue and expenses during the reported period. Actual results could differ from those estimated.

(3) Restricted Cash

The flow of the restricted donations over the past two years and the number of scholarships granted is as follows:

	FY2015	FY2016				FY2017			
	Year End	Funds Con- tributed	Funds Used	Scholar- shop Issued	Year End	Funds Con- tributed	Funds Used	Scholar- ships Issued	Year End
Robin Welles Fund for Artistic Excellence	\$0	\$5,085			\$5,085	\$2,320	\$2,268	7	\$5,137
"New Day" Restricted Fund	\$0	\$14,441	\$3,620	12	\$10,821		\$10,821	15	\$0
Individuals		\$5,941							
Foundations		\$8,500							
Art Essentials Restricted	\$12,165	\$0	\$5,951		\$6,214		\$6,214		\$0
Scholarship Restricted Fund	\$1,964	\$0	\$600	3	\$1,364		\$0		\$1,364
Total Restricted Fund	\$14,129	\$33,968	\$10,171	15	\$23,484	\$2,320	\$20,667	22	\$6,501

(4) Fixed Assets

The details of the fixed assets accounts are as follows:

	As of July 31	
	2017	2016
Land	\$32,683	\$32,683
Construction	6,008,516	6,008,516
Furniture & Fixtures	24,767	23,623
	<hr/>	<hr/>
	\$6,065,966	\$6,064,822
Accumulated Depreciation	\$(551,295)	(\$384,005)
Net Fixed Assets	\$5,514,671	\$5,680,817

(5) Management and General Expenses

Management and general expenses can be detailed as follows:

	2017	2016
Personnel	\$384,137	\$309,696
Contractors	66,597	83,888
Occupancy	67,767	57,795
Publication/Advertising and marketing	44,457	68,637
Others	28,853	26,813
	<hr/>	<hr/>
	\$591,811	\$546,829

(6) Temporary Subleasing

During the years 2013 and 2014 a major retrofit for earthquake and an expansion of the building was carried out. On August 22, 2014, the various short-term loans were converted to an 8-year mortgage with monthly payments of \$34,010 and a final payment of \$4,298,000 on August 7, 2022. The final payment was reduced due to the additional early payment of \$600,000 in fiscal 2015 and 2016.

In order to secure the necessary financing for the retrofitting and expansion, PAL was required to lease a part of the building, meeting the bank's requirement to have a rental income for the coming eight years equal to at least 130% of the finance payments. The lease has been effective as of May 2014 and will cover an initial period of eight years after which an optional extension of two periods of 5 years exists.

Temporary rental income net of lease and commission expenses are detailed as follows:

	2017	2016
Rental income from temporary sublease	\$717,800	\$696,878
Brokerage commission and other expenses	703	50,065
Mortgage interest	229,924	245,364
Depreciation related to subleased property	107,065	108,544
	\$380,107	\$292,905

(7) Subsequent Events

As of October 17, 2017, no events have taken place that could impact the financial statements as of July 31st, 2017.

Management has evaluated all material events occurring subsequent to the date of the financial statements up to the date and time the Report of the Independent Audit of these financial statements were issued.

BOARD AND STAFF

(as of fiscal year end)

DIRECTORS

EXECUTIVE COMMITTEE

Theo Keet, President
Theresa Peek, Vice President
Dan Kostenbauder, Treasurer
Clifton Poon, Secretary and Chair Event Committee

OTHER DIRECTORS

Joy Chase, Co-chair Exhibition Committee
Kathryne Culpepper, Co-chair Exhibition Committee
Hazel Keelan
Glen Rojas, Chair Committees for ED Search, Nomination and Strategic Plan Compliance
Mary Beth McWright
Robin Scholl, Chair Education Committee
Josephine Schuster
Rebecca White, Chair Marketing Committee

ADVISORY BOARD

Ken Brenner – Avid Bank
Liz Kniss – City Council, Palo Alto
Analisa Pratt - Lawyer
Dawn Billman – Palo Alto Chamber of Commerce
Pamela Krudop – Avid Bank

STAFF

Jonathan Graves, Executive Director & CEO
Natasha Cook, Financial Director
Aly Gould, Marketing Director
Denise Curti, Education Program Director
Devan John, Gallery Manager and Art Teacher
Yogita Kandpal, Office Manager and Membership Manager
Hiba Ahammou, Office Assistant

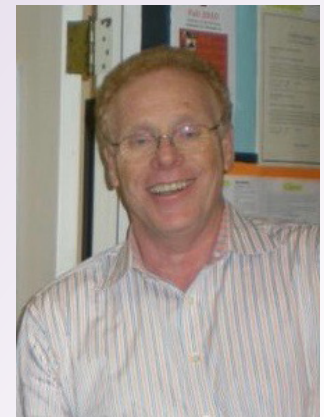


IN MEMORY OF

Helen Ogle was a long-time member of PAL and created the woodcut logo that was used for many years. She was 94 when she died on March 6, 2017. She also enjoyed watercolor and music. She lived in Channing House from 2003.

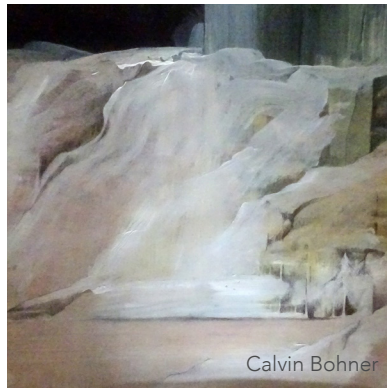


Chris Golson taught photography at PAL. He was 65 when he died on September 5, 2017. Chris was an award-winning, exhibited digital photographer and amateur videographer who grew up in France and the Netherlands. He held many executive marketing positions in major companies before he retired. He is survived by his wife, Kit Golson, who was a director on the Board of the Pacific Art League.

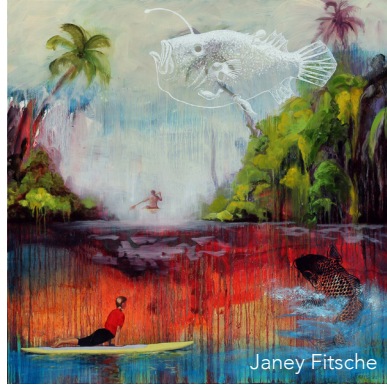




Teresa Ryals



Calvin Bohner



Janey Fitsche

PACIFIC ART LEAGUE

668 Ramona Street, Palo Alto, CA 94301
(650) 321-3891
www.pacificartleague.org